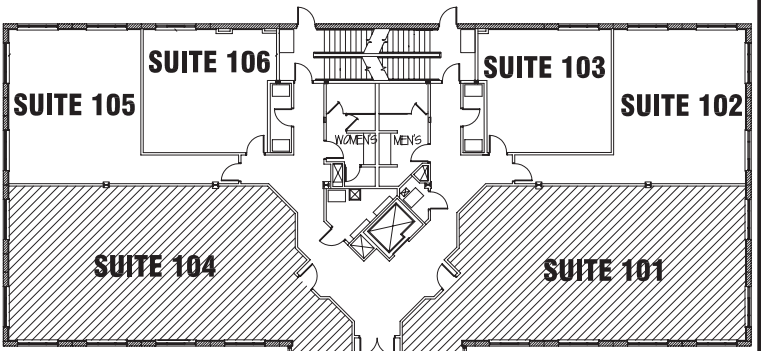
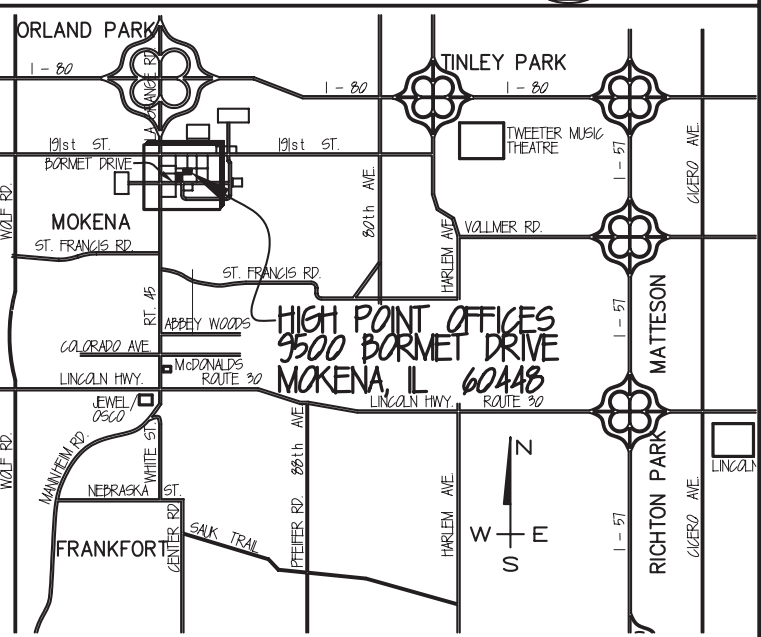


HIGH POINT I & II 9500 & 9550 BORMET DRIVE MOKENA, IL 60448

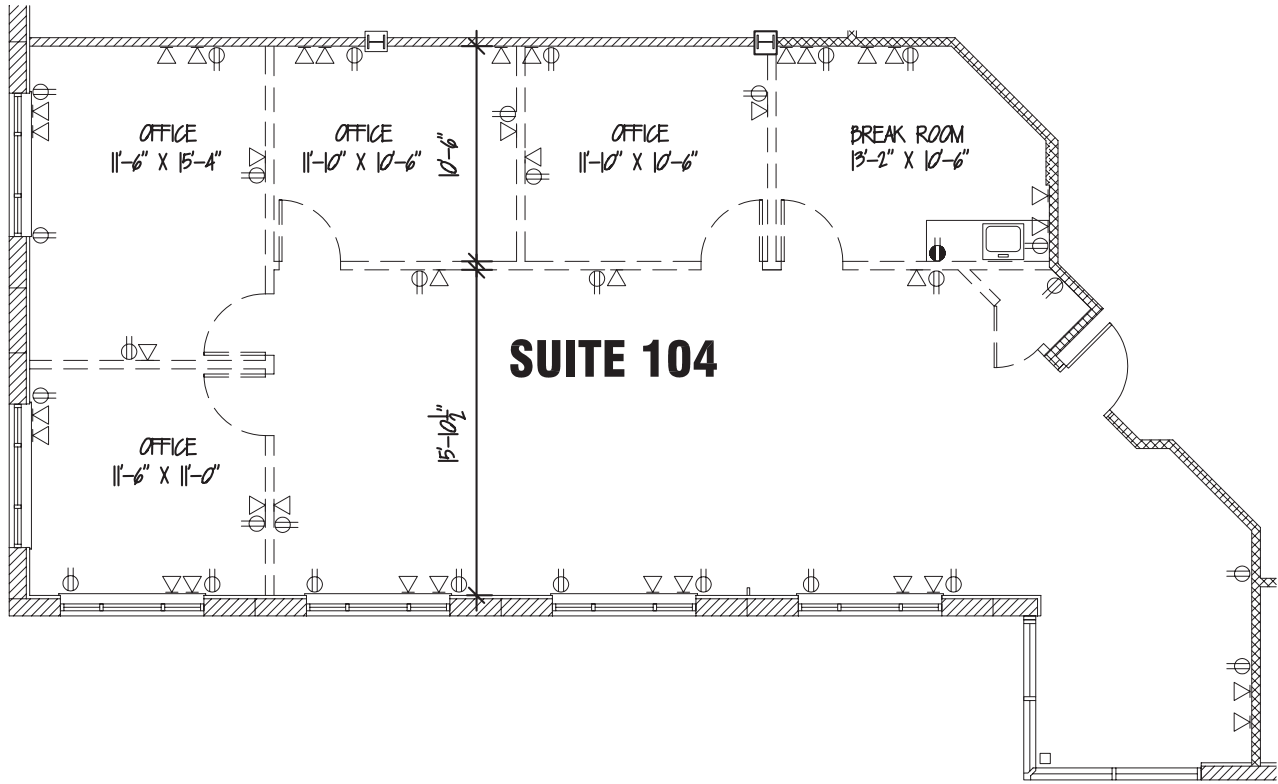


LEGEND MAP



HIGH POINT OFFICES
9500 BORMET DRIVE
MOKENA, IL 60448

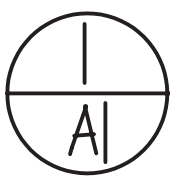
LOCATION MAP



SUITE 104

NOTE:
* ABOVE IS A STANDARD BUILDOUT OPTION.
* SPACE IS BARE RIGHT NOW.

**CALL JOHN OLIVIERI AT
815-469-6400
FOR MORE INFORMATION**



FLOOR PLAN - SUITE 104 & 101

N.T.S.
1,842 SF OF RENTABLE SPACE, WITH
1,600 SF BEING USABLE OFFICE SPACE
SUITE 101 IS A MIRROR OF THIS LAYOUT

