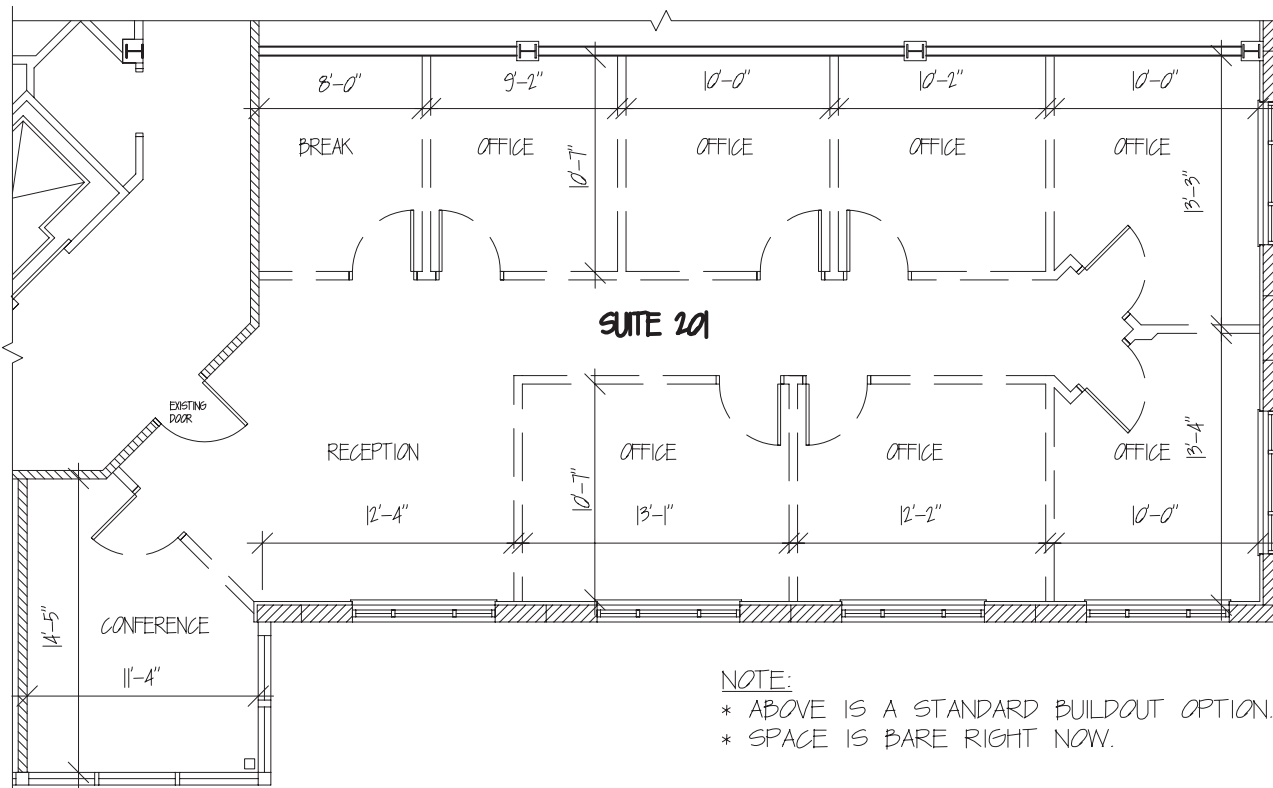
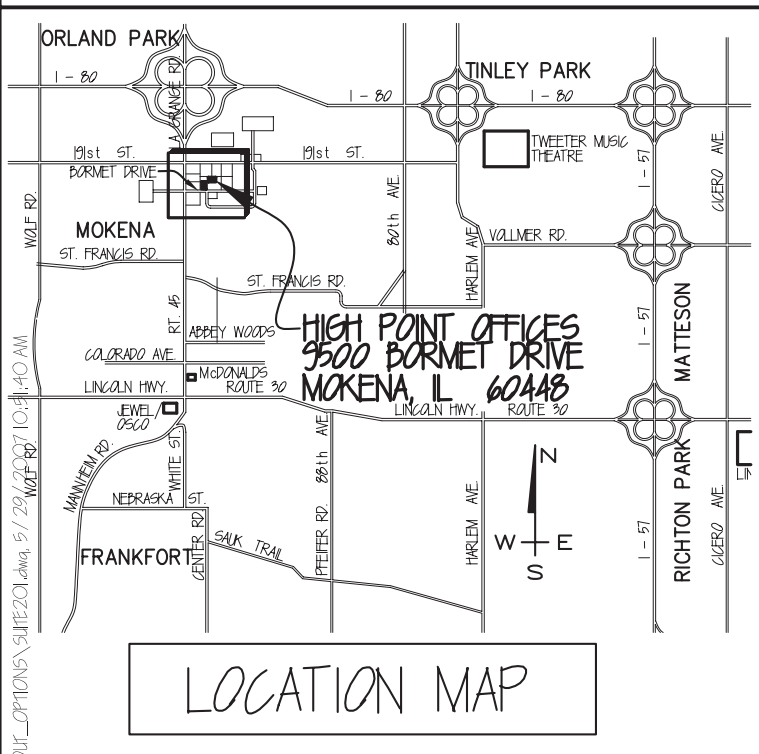
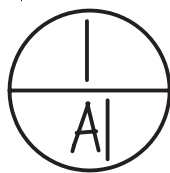


HIGH POINT II 9550 BORMET DRIVE MOKENA, IL 60448

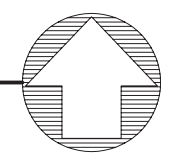


NOTE:
 * ABOVE IS A STANDARD BUILDOUT OPTION.
 * SPACE IS BARE RIGHT NOW.



FLOOR PLAN - SUITE 201

N.T.S.
 1,900 SF OF RENTABLE SPACE, WITH
 1,650 SF BEING USABLE OFFICE SPACE



**CALL JOHN OLIVIERI AT
 815-469-6400
 FOR MORE INFORMATION**

L:\REAL-ESTATE_PROP\HP.II\BLDOUT_OPTIONS\SUITE201_RENTAL.dwg, 5/29/2007 10:41:40 AM