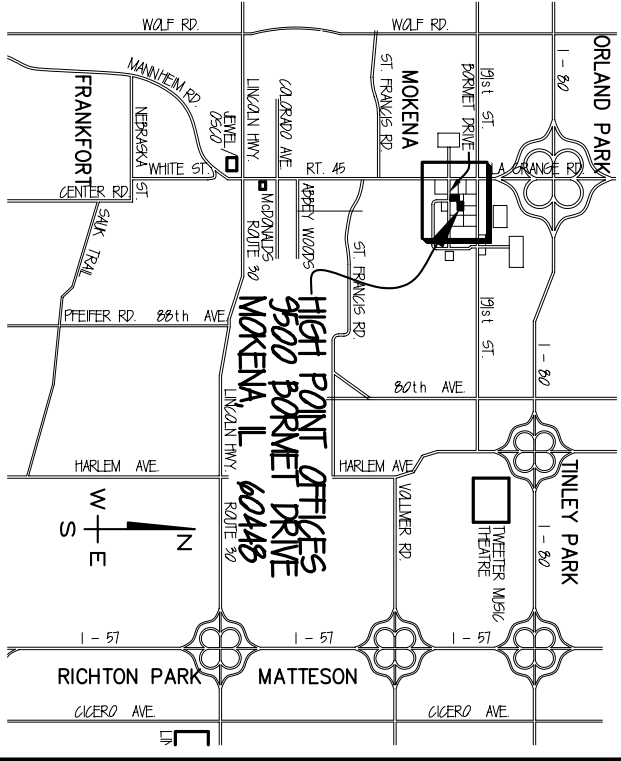
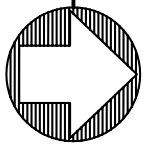


LEGEND MAP



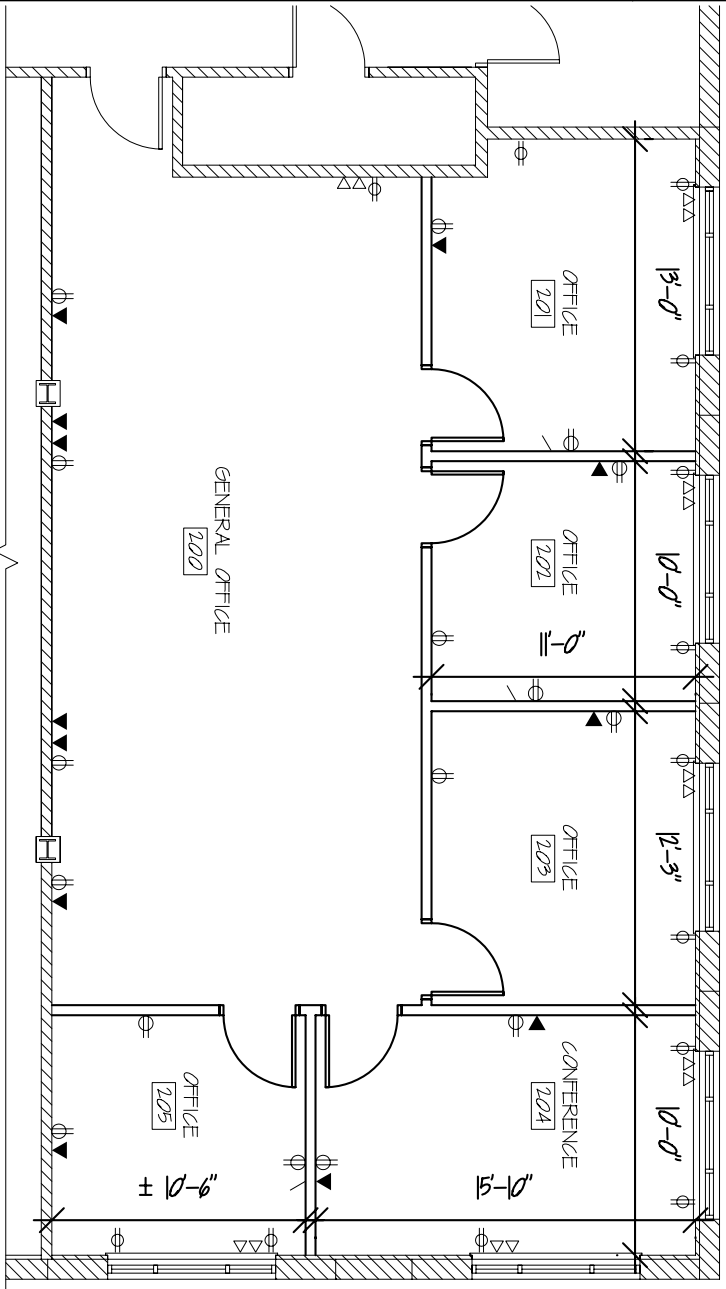
LOCATION MAP

CALL JOHN OLIVIERI AT

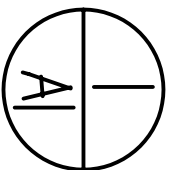
815-469-6400

FOR MORE INFORMATION

HIGH POINT I 9500 BORMET DRIVE MOKENA, IL 60448



FLOOR PLAN - SUITE 201



NTS
1,554 SF OF RENTABLE SPACE, WITH
1,350 SF BEING USABLE OFFICE SPACE

